



Dog Park Etiquette

Members' Guide



Animal Information Resources In Baltimore County

- Animal Bites: Health Department..... 410-887-2724
- Animal Control Division.....410-887-5961
- Animal Shelter.....410-887-5961
- Animal Hearing Board.....410-887-5964
- Animal Licensing.....410-887-3630
- Low Cost Spaying and Neutering:
- Humane Society.....410-833-4480
- SNAP (Spay/Neuter All Pets)..410-426-2020

B.A.R.C. Park at Hannah More is a Members Only Dog Park. All members must show proof of a County Dog License. To become a member or for more information, visit www.reisterstownrec.com



Baltimore County Department of Recreation and Parks
12035 Reisterstown Road, Room 205
Reisterstown, Maryland 21136
410-887-1142

Logo designed by Kathy Schofield

Reisterstown Recreation Council's
Dog Park Committee
P.O. Box 141
Glyndon, Maryland 21071-0141
barcparkathannahmore@yahoo.com
www.reisterstownrec.com
410-887-1142

Dog Park Rules and Regulations

- Owners/Handlers are legally and financially responsible for any injuries caused by their dog and are advised to use the Dog Park at their OWN RISK.
- Aggressive dogs are not allowed. Dogs showing aggression toward people or other dogs must be removed from the park immediately.
- Alcohol, smoking, human food, and glass containers are strictly prohibited.
- Bones, rawhides, and squeaky toys are prohibited because they can trigger aggression. Frisbees, balls and small training treats are acceptable.
- No children under the age of 12 are allowed in the off-leash area. Small children are vulnerable and can be seriously injured. An adult must accompany children under 18. ABSOLUTELY NO RUNNING.
- Dogs must be on-leash when entering and exiting the park. Leashes are to be taken off in-between the two gates leading into an off-leash area.
- Maximum of 2 dogs per owner/handler.
- Accompany and supervise your dog at all times including quick access to placing the dog back on its non-retractable leash. The dog must be in visual and voice command control at all times. The dogs may NEVER be left unattended under any circumstance.
- Prong, spike, or choke collars and retractable leashes are prohibited. These can cause injury or death during play.
- Clean up and dispose of feces left by your dog. Bags and receptacles are provided within the Dog Park.
- No sick dogs or those with fleas, ticks, worms and other parasites are allowed. Disease spreads rapidly and jeopardizes the health of all dogs.
- No dogs in heat are allowed. This can lead to inappropriate play.
- Do not bring puppies younger than 4 months old to the Dog Park. They are not sufficiently immunized, and it is not safe.
- All dogs must be licensed and fully immunized with tags and collars on at all times, to easily restrain them, if necessary.
- Owners/Handlers must stop dogs from digging and immediately fill holes.
- The off-leash Dog Park is for dogs, their owners/handlers and others accompanying them. No other use is allowed.
- Professional dog trainers and/or groomers are not permitted to conduct their business on Baltimore County property.
- The smaller dog area is for small, timid and elderly dogs. The larger dog area is for large and active dogs.
- Excessive barking is prohibited. Dogs barking continuously or uncontrollably must be removed from the park immediately.
- Be courteous and respectful to new dogs and handlers entering the Dog Park by not congregating at the entrance. This is intimidating, and such gang behavior can create tension and spark conflict. Allow dogs entering the Dog Park to acclimate.

The dedicated volunteers of the BARC Park appreciate your help in maintaining and caring for the park to make it a safe and enjoyable experience for everyone.

Mission Statement

The BARC Park at Hannah More was established in 2007 by a volunteer committee under the auspices of the Baltimore County Department of Recreation and Parks and the Reisterstown Recreation and Parks Council. Its intent is to provide a clean, safe and secure off-leash area where well-behaved dogs can socialize, exercise and play. We welcome all dog lovers and friends of the park who are willing to abide by the park's guidelines.

Frequently Asked Questions

What is the BARC PARK?

Baltimore Animal Recreation Center. It is a fenced area where dogs can run off-leash to exercise, relax, socialize and have fun in a safe and secure area.

Why is the Dog Park for Members Only?

Membership is necessary because it is the only way to verify that dogs are licensed and immunized, thereby insuring the safety and healthy well-being of all dogs and handlers.

Also, membership ensures that everyone who enters the park has read and agreed to follow the rules. This will make using the park a safer and more enjoyable experience.

Is a Dog Park appropriate for all dogs?

No. If your dog acts fearful, aggressive or bullies other dogs, you should not use the dog park.

Where is the Dog Park?

It is at Hannah More in Reisterstown to the right of the children's "Sunshine Playground" in the very back of the property.

When is the Dog Park open?

The BARC park is open from sunrise to sunset.

Where does the Membership money go?

All Membership money goes toward the operation and maintenance of the park, making improvements, adding equipment and holding special events. We hope to purchase dog play equipment and shade structures, plant trees, plan special events and design a dog walk path.

How can I help?

Volunteers and charitable contributions are always welcome. We need volunteers to help monitor the park, assist with administrative needs and help with special events and projects.

HOW TO KEEP YOUR DOG SAFE AND HAPPY AT THE DOG PARK

Pet Behavior Help, Inc.

Know When To Stay And When To Leave

- Observe the park before you enter. If there are large numbers of unfamiliar dogs or a group of dogs bullying the current park goers, you may want to come back when less busy.
- Allow a new dog entering the park a chance to acclimate.
- Tired and stressed dogs do not react appropriately to difficult situations.
- Intervene when play gets too rough or your dog becomes over-excited.

Your Dog May Stay With APPROPRIATE PLAY

- Moderate Barking
- Wrestling
- Mouthing
- Play-Bowing
- Chasing
- Pawing

Consider Leaving The Park If Your Dog...

Shows Signs Of STRESS

- Raising hackles
- Yawning
- Cowering
- Hiding
- Trying to leave
- Pinning ears back

Engages In INAPPROPRIATE PLAY

- Pack Behavior- Multiple dogs chasing one dog
- Relentless Chasing- Not letting the other dog rest or get away
- Bullying
- Mounting
- Body Slamming
- Charging
- Baring Teeth
- Cornering
- Crowding
- Snarling
- Lunging
- Snapping
- Biting

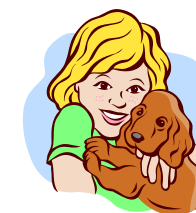
How To Handle A Dog Fight

- If a dog corrects another dog for rude behavior and the correction is quick, fair, does no harm and ends as soon as the offending dog backs off, no intervention is needed.
- Sudden, quick disagreements with lots of noise that end in a matter of seconds are normal, and it is probably safe to allow the dogs to remain in the park if neither shows any inclination to continue the argument.
- Interrupt any situation that seems to be escalating by creating distraction or removing your dog.
- Use your voice in a calm but commanding way to stop the fight. Screaming simply increases the arousal of the dogs involved.
- **DO NOT** place your hands into the middle of a dog fight to separate dogs. If physical intervention is needed, try to grab the back legs of your dog and "wheel-barrow" him until he calms down. Fighting dogs will often strike at anything that moves near their face, and human hands are far more delicate than most areas where one dog will bite another.
- If you see or hear a squabble between other dogs, get your dog immediately and take him away from the area.
- Do not panic. The louder the fight, the more bluff and bluster is involved, the less damage. Most dog fights between similar size dogs do not result in serious injury.
- Once a fight occurs, the adrenaline levels of the dogs involved will rise for several hours. Remove these dogs from the park and exercise them elsewhere to avoid the potential of another fight.



Tips for Kids & Parents:

American Kennel Club



- Always ask a dog's owner if you may pet the dog. Some dogs shouldn't be touched. The dog may be "on duty" as an assistance or service dog, or may be injured, ill, or afraid of children.
- Approach a dog from the front or side - not from behind. Hold your hands low and speak softly. Do not surprise a dog, force him into a corner, wave your hands in the air, or scream at the dog.
- If there's one place a dog may get defensive, it's at the food dish. Your dog should not growl when you get near his dish, but don't interfere when a dog is eating.
- Avoid teasing, rough wrestling, or tug-of-war games. Dogs may get too enthusiastic in these sorts of games and forget that you are not a dog.
- Respect a dog's space. Dogs naturally defend their territories.
- Never try to break up a dogfight. While most fights end quickly, call an adult for help. Trying to separate fighting dogs or yelling at them may make them more excited, and they might turn on you or accidentally bite you.
- Observe canine body language. Beware of a dog that is barking, growling, or showing his teeth. Stay away if his ears are back, tail is up, or his hair is standing up on his back. Say "NO" firmly and slowly walk away with your arms by your side. Do not scream, stare into his eyes, or run away.